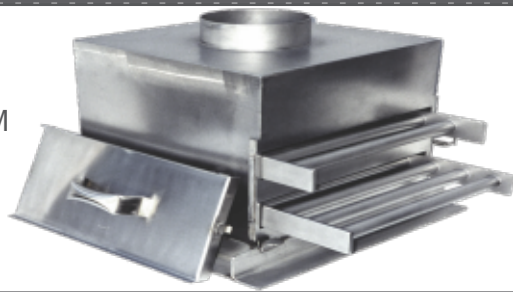


MagGrate™



CESCO™ Magnetic Grate Separators

**Magnetic Grates Remove Metal Trash from
Free-Flowing, Granular, and Powdered Products**

Applications

CESCO magnetic grate separators are typically fitted to bag dumps, chutes, ducts, hoppers, and sifters where the product being processed cascades over multiple rows or tiers of magnetic tubes. CESCO magnetic grates protect down-stream equipment from damage while insuring the quality of the end-product.

Description

Low cost ceramic magnet grates can remove larger items such as nuts, bolts and tools, while powerful, rare earth, Neodymium magnet grates capture and hold both ferrous and work-hardened stainless steel trash from nuts and bolts to fines as small as 0.0001 inches in diameter.

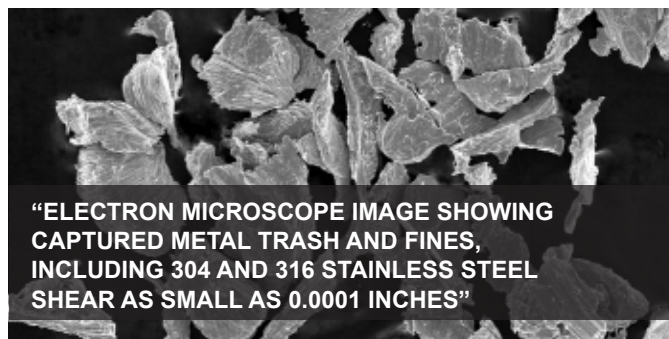
Proprietary Designs

CESCO magnetic grate separators are fabricated to customer specification from 304 or 316 stainless steel with heavy-duty support bars that resist day-to-day twisting and bending. All grate components including tubes, deflectors, and support bars are carefully welded without pits, cracks, or crevices, then glass bead polished, inspected, and certified sanitary before shipment.

EZ-Clean Designs

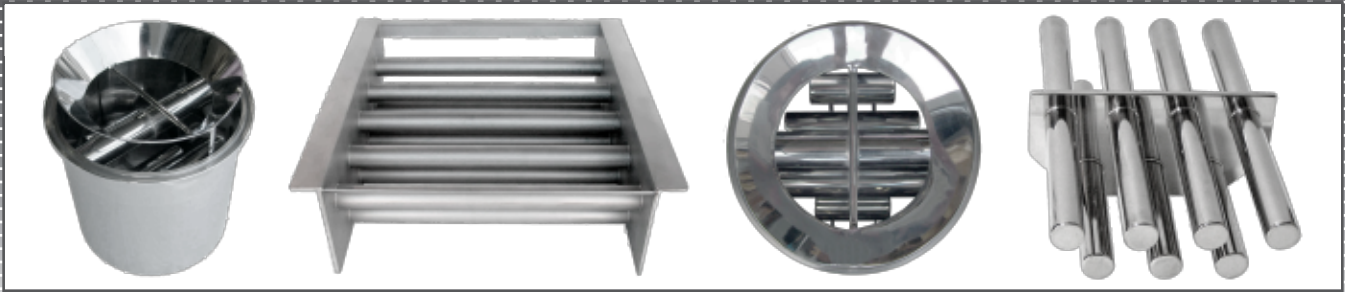
For those applications where large accumulations of trash takes place we recommend easy cleaning designs where the captured trash is simply “wiped” off with a simple pull-push operation.

Operating Ranges
To 300° F.



1-877-624-8727
www.cescomagnetics.com





Recommendations/Considerations for Custom Designs

CESCO can fabricate magnetic separators in almost any size or shape. Typical configurations include multiple or tapered layered grates, with or without deflector bars or baffles to transition product flow, and in drawers or other housings specific to the application. Customers can specify any length of magnetic tube or width between tubes as long as that width is 0.5 inches or greater.

In addition to specific dimensions for the application including clearances, please provide us with: (a) the product being processed, (b) the size of the product in chunk size or length and width, (c) product flow rate, and (d) the likelihood of the product to agglomerate, and (e) what you want to capture.

If you will require mounting brackets please advise us during the design consultation.

Caution

Do not drill, saw, or hammer magnetic grates.